

DISCOVER
DIAGNOSE
DEFEND



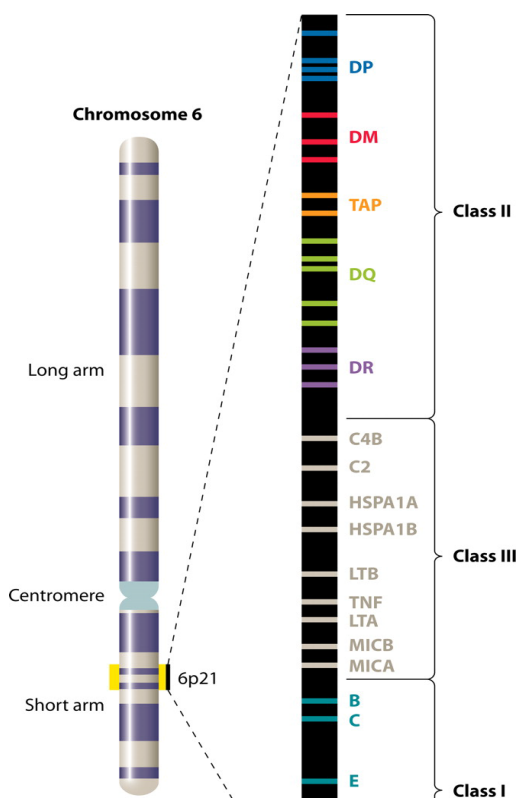
Introducing....Clinical Testing for

High Resolution HLA Typing

- HLA Typing for class I and II antigen is mandatory for any organ transplant both donor and recipient undergoes HLA Typing .
- Minimum 50% match is essential for a successful transplant.
- DR typing is important for a successful long-term outcome of the transplant.

Advantage of High Resolution HLA Typing over Low Resolution

- ✓ More Resolution of HLA analysed
- ✓ More Number of Subtyping analysed
- ✓ Greater Sensitivity & Accuracy
- ✓ Support the clinicians to take the decision of transplant



India's Leading Super Specialised Laboratory Network

Our Offerings

High Resolution HLA Typing- Complete Test

- 100% G group level typing is done.
- Additionally, non-expressed alleles that are listed in the CWD (common or well-documented) categories within G group based on NMDP high resolution standard are also resolved.
- Given below are non – expressed alleles that are resolved by sequencing other than ARS (antigen recognition site) regions.

Code in table	Null allele to be resolved	Other than ARS region
A*01:01:01G	A*01:04N	Exon 4
A*03:01:01G	A*03:21N	Exon 4
A*24:02:01G	A*24:09N, A*24:11N	Exon 4
A*68:01:02G	A*68:11N	Exon 1
B*15:01:01G	B*15:01:01:02N	Intron 1
B*51:01:01G	B*51:11N	Exon 4
C*04:01:01G	C*04:09N	Exon 7
DRB4*01:01:01G	DRB4*01:03:01:02N	Intron 1

HLA High Resolution Typing- Basic Test

- Able to provide G group level typing for more than 80-85% of samples.
- Use Single Molecular Sequencing method with Miseq as a main platform.

Test Information

Test Code	Test Name	Technique	Specimen	TAT / Reported on
SMO10191	HLA high resolution typing-basic	PCR & Sequencing	Buccal swabs in the kit provided by Oncquest	12 working days
SMO10192	HLA high resolution typing-complete			
SMO10052	HLA-ABDR TYPING (One Person)	SSP-PCR	5 - 6 ml EDTA anticoagulated Whole blood in 2 Lavender top tubes.	15 Working Days
SMO10053	HLA-ABDR TYPING (Two Persons)			
SMO10055	HLA-DR, DQ (CLASS II)			
SFC10038	HLA-DR Flowcytometry	Flow Cytometry	2 ml whole blood /Bone Marrow in Sod. Heparin tubes.	Next Working day

Regd. Office & Main Lab.: Oncquest Laboratories Ltd. 3 - Factory Road, Adjacent Safdarjung Hospital, New Delhi - 110029, Telephone.: 011-30611432, 011-30611467,

Web: www.oncquest.net  Oncquestlaboratories